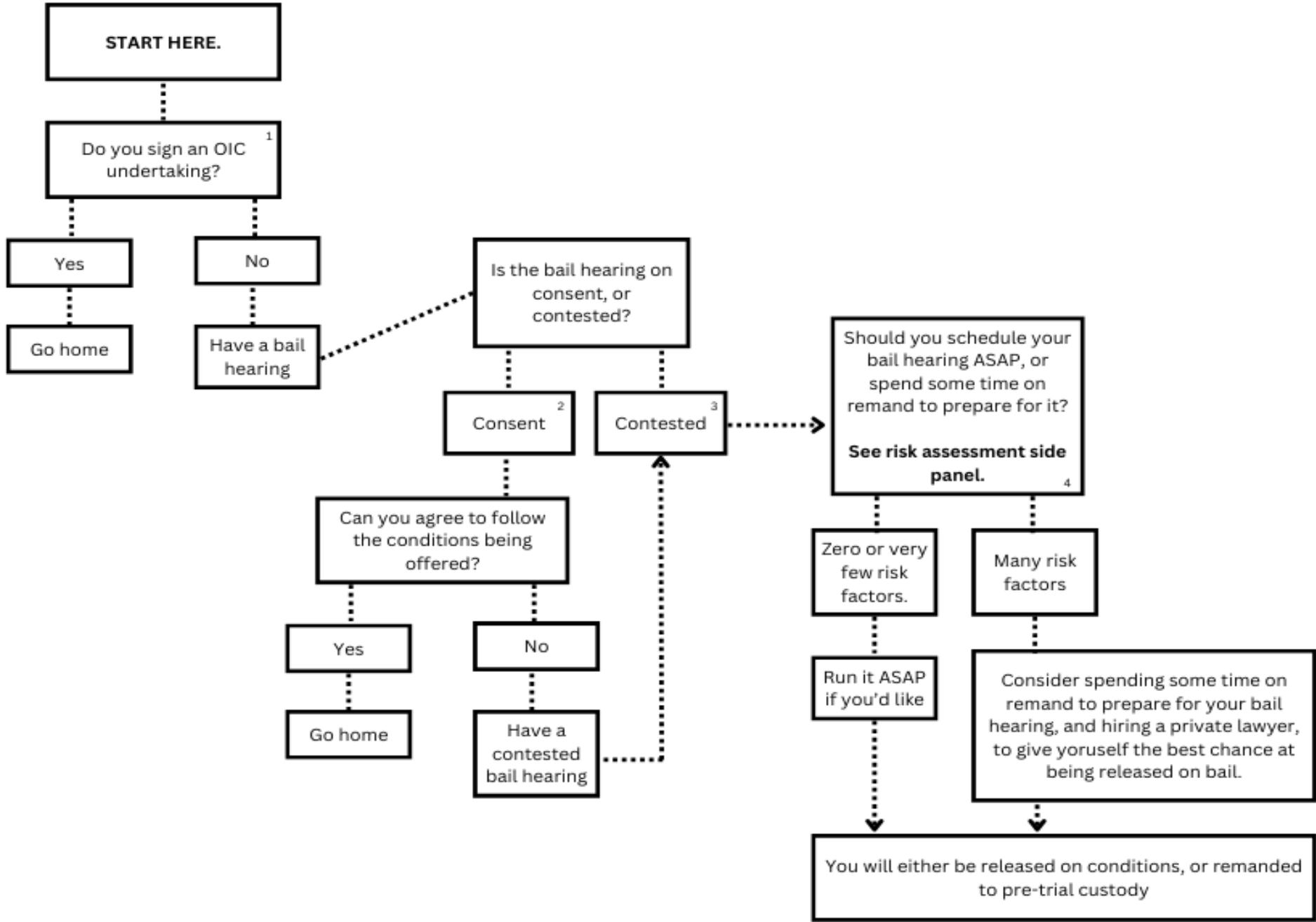
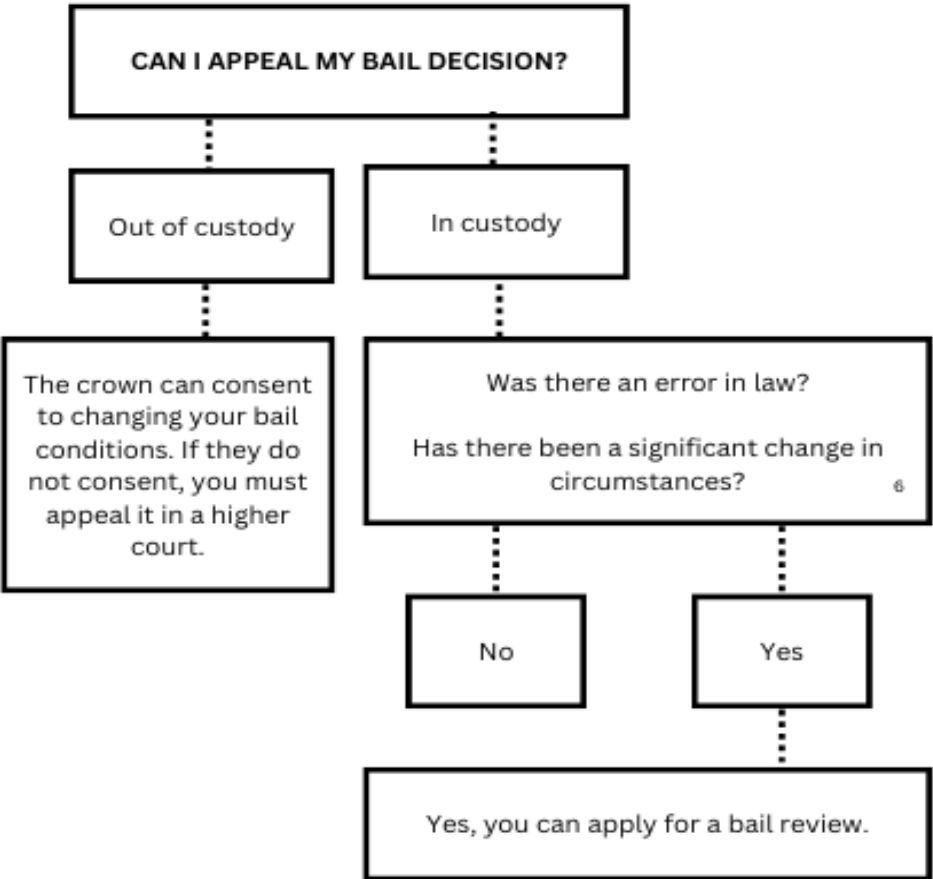


Decisions About Bail & Release



RISK ASSESSMENT SIDE PANEL

- Are you Black, Indigenous, or racialized?
- Do you have a mental health diagnosis?
- Are you autistic, neurodivergent, ADHD, or have a learning disorder?
- Are you unhoused?
- Are you unemployed?
- Do you have previous breach charges from failing to attend court or not following your probation or bail?
- Do you have previous convictions?
- Do you have other ongoing charges?
- Will your bail hearing be a reverse onus hearing? 5
- Are your charges serious?
- Are the circumstances of your arrest polarized?
- Will you need a surety?



Additional Information

- 1. An OIC (Officer In Charge) undertaking is when police offer to release you from the police station if you sign certain conditions.
- 2. A bail hearing is on consent if the crown is willing to agree to release you if you sign certain conditions
- 3. A bail hearing is contested if the crown does not want to release you from detention, or you aren't willing to follow the conditions of a consent release.
- 4. Remand is time spent in custody before your bail hearing.
- 5. A reverse onus hearing is when you must convince the Justice of the Peace that you should be released. Normally the crown must prove that you should be kept.
- 6. A significant change in circumstance would be something like having a suitable surety come forward where there wasn't one before.

COURT PROCESS TIMELINE

Timeline can vary based on the charges, evidence, and whether you are in custody.

